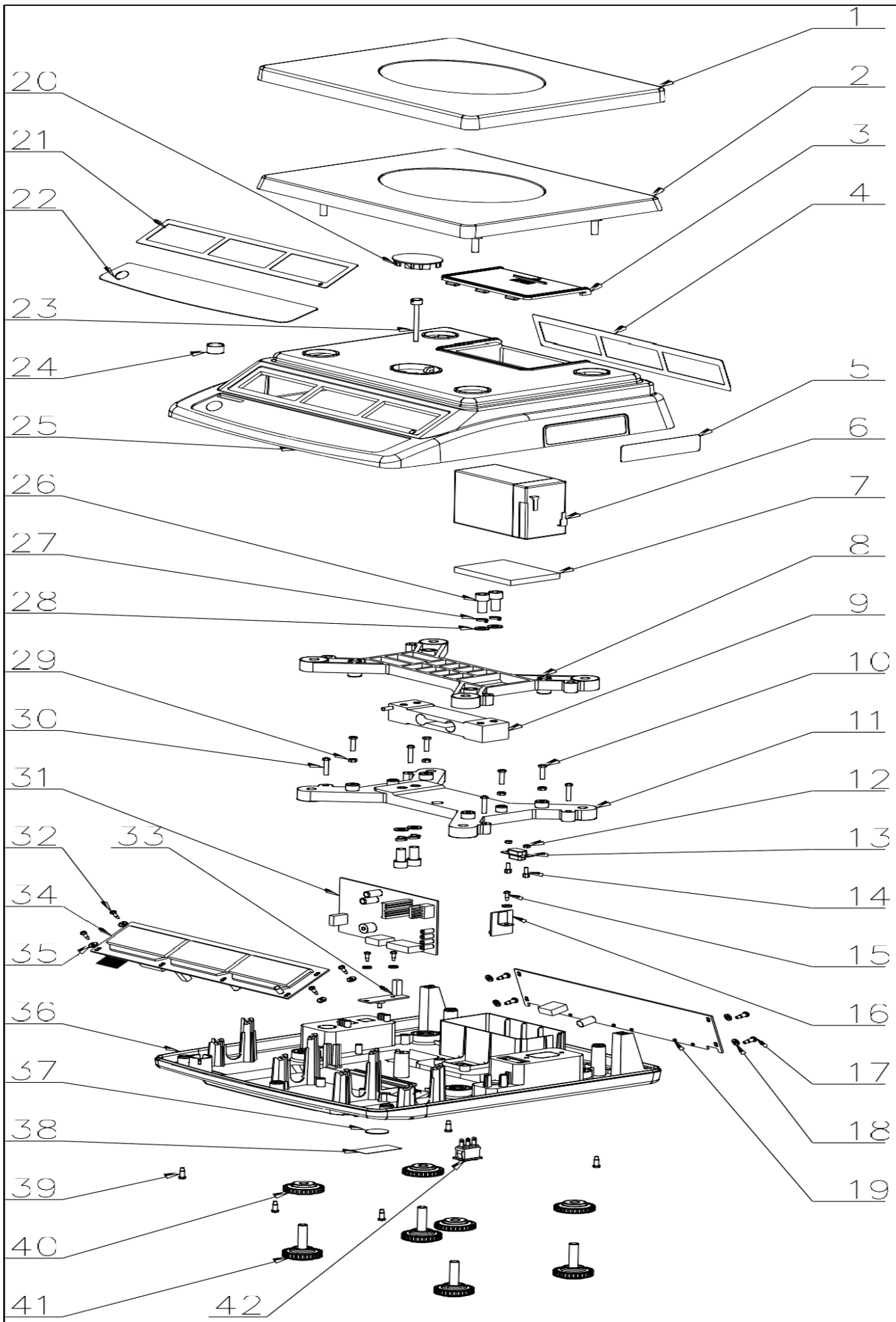


ATP



ATP

No	parts name	parts code	material	spec
1	SST pan	113400231	SST	230mmx300mm
2	pan	111700127	ABS	230mmx300mm
3	battery cover	111700212	ABS	
4	rear display overlay for ATP	113701748		
5	name plate	113100278		
6	rechargeable battery	110200029	lead acid	6V/4Ah
7	foam	111900031	CR	
8	load cell upper bracket	112300094	Aluminum	
9	CZL-6D-C3-50Kg load cell	113000210		
9	CZL-6D-C3-20Kg load cell	113000209		
9	CZL-6D-C3-10Kg load cell	113000208		
10	hexagon screw	113200069	20Mn	M4x16
11	load cell lower bracket	112300096	Aluminum	
12	hexagon nut	113200251		M3
13	DB9 connector	110600020		optional
14	hexagon nut for D connecto	113200031		optional
15	"+" self thread screw	113200030	20Mn	3x8
16	AC adapter jack PCB	120100415		
17	"+" self thread screw	113200044	20Mn	M4x12
18	insulative washer	113200233	EDPM	10x4x1.2t
19	rear display PCBA	120100433		
20	lead seal cover	111700130	ABS	approved version
21	front display overlay	113701747		
22	keyboard	113502129		
23	lead seal pole	114300061		approved version
24	level bubble	112200019		14.7mm
25	top cover	111700156	ABS	
26	internal hexagon screw	113201290		M6x16, 8.8
27	spring washer (M6)	113200240		HRC42-50
28	washer (M6)	113200115	65Mn	200-300HV
29	hexagon nut	113200256		M4
30	self thread screw	113200092	20Mn	4x20
31	main PCBA	120100660		
32	self thread screw	113200033	20Mn	3x12
33	calibration switch PCBA	120100670		approved version
34	front display PCBA	120100432		
35	insulative washer	113200033	EDPM	8x3.1x1.2t
36	bottom cover	111700333	ABS	
37	seal label	113200348		approved version
39	self thread screw	113200008	20Mn	4x12
40	foot fixer	111700134	ABS	
41	foot	111800102	PVC	
42	power switch	114100001		